



# CX1 Network Accelerometer & Inclinometer Quick Start Guide Version 1.1



---

<b>1</b>	<b>PREAMBLE .....</b>	<b>3</b>
1.1	FCC Statement.....	3
1.2	Software License Agreement.....	3
1.3	Acceptable Use .....	5
<b>2</b>	<b>CX1 NETWORK ACCELEROMETER AND INCLINOMETER .....</b>	<b>5</b>
2.1	General.....	5
2.2	Specifications.....	6
2.3	LED Status Indicator .....	6
<b>3</b>	<b>GETTING STARTED .....</b>	<b>6</b>
3.1	System Requirements .....	6
3.2	Installing the USB Device Driver.....	7
3.3	Connecting the CX1 to an Ethernet network.....	9
3.4	Connecting the CX1 to a PC via USB.....	9
3.5	Available Software Applications.....	10
3.6	Installing CX Recorder .....	10
3.7	Installing the CX1 API .....	10
3.8	Installing Sensware2.....	10
<b>4</b>	<b>MISCELLANEOUS.....</b>	<b>11</b>
4.1	CX1 Cleaning .....	11
4.2	CX1 Storage .....	11
4.3	CX1 Calibration.....	11
4.4	Technical Support.....	11
4.5	Product Warranty.....	11

---

# 1 Preamble

## 1.1 FCC Statement

This product has been tested and found to comply with the limits for a Class A digital device pursuant to Part 15 of the FCC Rules. These limits are designed to provide reasonable protection against harmful interference when the equipment is operated in a commercial environment. This product generates, uses, and can radiate radio frequency energy and, if not installed and used in accordance with the manufacturer's instruction manual, may cause harmful interference with radio communications. Operation of this product in a residential area is likely to cause harmful interference, in which case you will be required to correct the interference at your own expense.

This device complies with Part 15 of the FCC Rules. Operation is subject to the following two conditions:

This device may not cause harmful interference.

This device must accept any interference received, including interference that may cause undesired operation.

This device must only be used with the supplied interface cables. A Class A digital device is intended for use in commercial, business and industrial environments.

## 1.2 Software License Agreement

PLEASE READ THIS SOFTWARE LICENSE AGREEMENT CAREFULLY BEFORE USING THE SOFTWARE.

License Grant: SENSR ("SENSR") and its suppliers grant to Customer ("Customer") a nonexclusive and nontransferable license to use the Sensware software ("Software") in object code form only on as many central processing units as is required to support the functionality of the products used in conjunction with this software.

EXCEPT AS EXPRESSLY AUTHORIZED ABOVE, CUSTOMER SHALL NOT: COPY, IN WHOLE OR IN PART, SOFTWARE OR DOCUMENTATION; MODIFY THE SOFTWARE; REVERSE COMPILE OR REVERSE ASSEMBLE ALL OR ANY PORTION OF THE SOFTWARE; OR RENT, LEASE, DISTRIBUTE, SELL, OR CREATE DERIVATIVE WORKS OF THE SOFTWARE.

Customer agrees that aspects of the licensed materials, including the specific design and structure of individual programs, constitute trade secrets and/or copyrighted material of SENSR. Customer agrees not to disclose, provide, or otherwise make available such trade secrets or copyrighted material in any form to any third party without the prior written consent of SENSR. Customer agrees to implement reasonable security measures to protect such trade secrets and copyrighted material. Title to Software and documentation shall remain solely with SENSR.

---

**SOFTWARE WARRANTY.** SENSr warrants that for a period of ninety (90) days from the date of shipment from SENSr: (i) the media on which the Software is furnished will be free of defects in materials and workmanship under normal use; and (ii) the Software substantially conforms to its published specifications. Except for the foregoing, the Software is provided AS IS. This limited warranty extends only to Customer as the original licensee. Customer's exclusive remedy and the entire liability of SENSr under this limited warranty will be, at SENSr's option, repair, replacement, or refund of the Software. In no event does SENSr warrant that the Software is error free or that Customer will be able to operate the Software without problems or interruptions. This warranty does not apply if the software (a) has been altered, except by SENSr, (b) has not been installed, operated, repaired, or maintained in accordance with instructions supplied by SENSr.

**DISCLAIMER.** EXCEPT AS SPECIFIED IN THIS WARRANTY, ALL EXPRESS OR IMPLIED CONDITIONS, REPRESENTATIONS, AND WARRANTIES INCLUDING, WITHOUT LIMITATION, ANY IMPLIED WARRANTY OF MERCHANTABILITY, FITNESS FOR A PARTICULAR PURPOSE, NON-INFRINGEMENT OR ARISING FROM A COURSE OF DEALING, USAGE, OR TRADE PRACTICE, ARE HEREBY EXCLUDED TO THE EXTENT ALLOWED BY APPLICABLE LAW. IN NO EVENT WILL SENSr BE LIABLE FOR ANY LOST REVENUE, PROFIT, OR DATA, OR FOR SPECIAL, INDIRECT, CONSEQUENTIAL, INCIDENTAL, OR PUNITIVE DAMAGES HOWEVER CAUSED AND REGARDLESS OF THE THEORY OF LIABILITY ARISING OUT OF THE USE OF OR INABILITY TO USE THE SOFTWARE EVEN IF SENSr HAS BEEN ADVISED OF THE POSSIBILITY OF SUCH DAMAGES. In no event shall SENSr's liability to Customer, whether in contract, tort (including negligence), or otherwise, exceed the price paid by Customer. The foregoing limitations shall apply even if the above-stated warranty fails of its essential purpose. SOME STATES DO NOT ALLOW LIMITATION OR EXCLUSION OF LIABILITY FOR CONSEQUENTIAL OR INCIDENTAL DAMAGES.

The above warranty DOES NOT apply to any beta software, any software made available for testing or demonstration purposes, any temporary software modules or any software for which SENSr does not receive a license fee. All such software products are provided AS IS without any warranty whatsoever.

This License is effective until terminated. Customer may terminate this License at any time by destroying all copies of Software including any documentation. This License will terminate immediately without notice from SENSr if Customer fails to comply with any provision of this License. Upon termination, Customer must destroy all copies of Software.

Software, including technical data, is subject to U.S. export control laws, including the U.S. Export Administration Act and its associated regulations, and may be subject to export or import regulations in other countries. Customer agrees to comply strictly with

---

all such regulations and acknowledges that it has the responsibility to obtain licenses to export, re-export, or import Software.

This License shall be governed by and construed in accordance with the laws of the State of Iowa, United States of America, as if performed wholly within the state and without giving effect to the principles of conflict of law. If any portion hereof is found to be void or unenforceable, the remaining provisions of this License shall remain in full force and effect. This License constitutes the entire License between the parties with respect to the use of the Software.

### **1.3 Acceptable Use**

The SENSR CX1 is a monitoring instrument only. It is not recommended for any use that requires the instrument to act as a triggering mechanism for critical functions. The CX1 is not to be used for:

**Monitoring life support or patient diagnoses**

**Any type of input or controller for any process or system including but not limited to:**

- Automated production or manufacturing
- Life support or patient diagnosis
- Vehicle or machine control
- Emergency, redundant, or back up systems

It is the responsibility of the user to confirm that any use of the product conforms with all country, federal, state, county and municipal laws, ordinances and regulations.

## **2 CX1 Network Accelerometer and Inclinometer**

### **2.1 General**

The CX1 Network Accelerometer and Inclinometer is a 5-channel instrument that measures and streams 3-axis accelerations and 2-axis inclinations readings to a connected PC via Ethernet or USB interfaces.

---

## 2.2 Specifications

Size:	4.718" x 4.323" x 2.295"
Weight:	20 oz
Connectivity:	1 - M12 Ethernet 1 - M12 USB Communication:
Power source:	Ethernet (POE) or USB
Ethernet Power consumption:	20mA@48V
USB Power consumption:	200mA @ 5V
Housing material:	Billet Aluminum
Status indicator:	Green LED
Accelerometer type:	3-axis MEMS
Accelerometer resolution:	.00001g
Accelerometer range:	+, - 1.5g
Frequency response:	DC - 200 Hz (.1dB)
Accelerometer sample rate:	2000 samples / sec
Inclinometer type:	2-axis MEMS
Inclinometer range:	+ - 15 degrees
Inclinometer resolution:	.00001 degrees
Inclinometer sample rate:	10 samples / sec
Device temperature range:	-40 to 176 degrees F

## 2.3 LED Status Indicator

The CX1 has an indicator LED that is used to quickly determine the connection status. A green light indicates the CX1 is connected to a PC via USB or connected to a network.

## 3 Getting started

The CX1 may be connected to a PC via USB or an Ethernet network and may be used with several different applications. It is useful to install the USB device driver even if the CX1 will be connected to a network because the USB connection may be used to set the IP address and other network parameters of the CX1. No device drivers are required for communication with the CX1 when it is connected to a network. You may install any or all of the software applications.

### 3.1 System Requirements

Please verify that your PC meets the following minimum system requirements:

Operating System:	Windows 2000 SP4, Windows XP SP2, or Vista 32-bit OS
CPU:	Pentium 4, 2.00GHz
System Memory (RAM):	2GB
Hard Disk:	2 GB free space (for data files)
Display:	1024 x 768, 32-bit "True Color"
Microsoft .NET Frameworks:	2.0 Service Pack 2 or newer and 3.5 SP1 or newer

Note: Microsoft .NET Framework software may be part of the operating system or may be installed as optional updates from Windows Update.

---

## 3.2 Installing the USB Device Driver

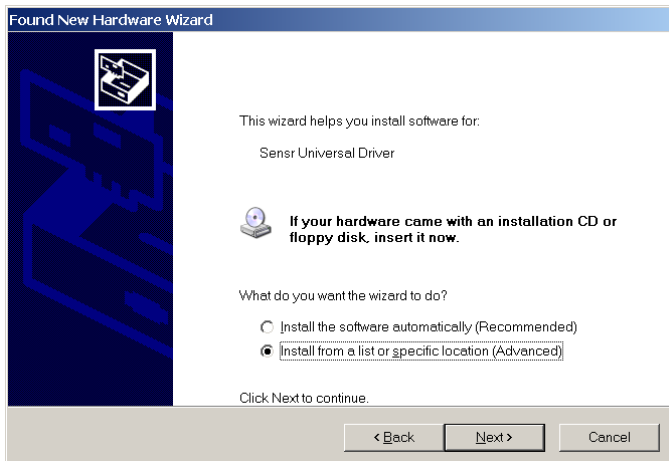
The drivers for the CX1 hardware are contained in a compressed (zipped) folder. The name of the compressed folder contains “CX Series USB Device Drivers.zip”. Double-click the icon for the compressed (zipped) folder. A window should open to show the contents of the compressed folder. Drag the folder inside the window to a location on your desktop. The drivers are now located inside this folder on your desktop and are ready to be installed.

Start the driver installation by connecting the CX1 USB cable to the CX1. The USB cable may be identified by the USB trident logo on the USB connector. The connector on the USB cable is keyed to the CX1 USB connector so that it may only be inserted in the correct orientation. Push the cable connector into the CX1 connector and then screw the cable connector into the CX1 to lock the connectors together. The USB connector may be connected to any available USB connector on the PC.

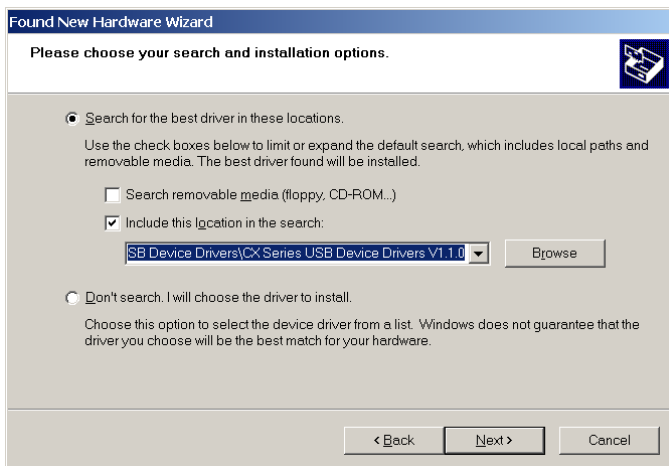
You should see an indication near the system tray that the computer has detected new hardware.



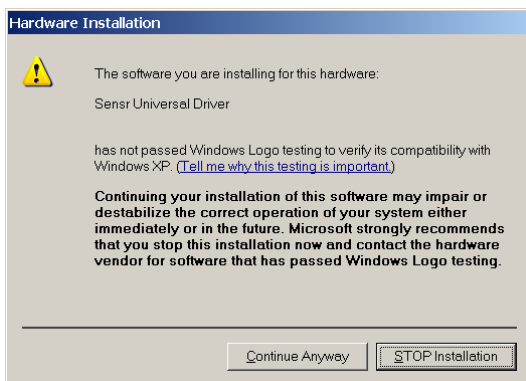
A moment later, a dialog will appear for the Found New Hardware Wizard. Do not allow the wizard to connect to Windows Update to search for software. Click the Next button.



Allow the wizard to install the software automatically. If the wizard cannot find the correct software, you can install from a specific location.

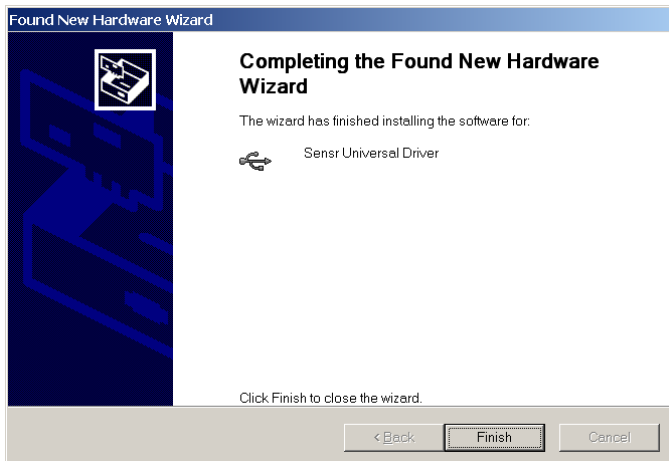


The driver installation wizard will ask for the location of the drivers. Use the Browse button to choose the newly created folder on your desktop and click the Next > button.

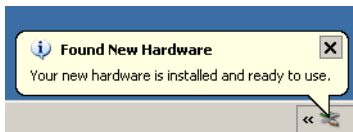


A warning will appear to advise you that the software has not passed Windows Logo testing. This is not a problem. Click the Continue Anyway button.





When the wizard is finished, this dialog appears. Click the Finish button.



You should see an indication near the system tray that the computer has finished installing the device driver for the hardware.

### 3.3 Connecting the CX1 to an Ethernet network

Start by connecting the Ethernet cable to the CX1. The Ethernet cable may be identified by the 8P8C / RJ-45 connector. The connector on the Ethernet cable is keyed to the CX1 Ethernet connector so that it may only be inserted in the correct orientation. Push the cable connector into the CX1 connector and then screw the cable connector into the CX1 to lock the connectors together. Finally, the 8P8C connector may be connected to an Ethernet computer network by inserting the connector into a network jack.

### 3.4 Connecting the CX1 to a PC via USB

If the device drivers are not already installed, please start with the driver installation procedure. After the drivers are installed, simply connect the USB connector to any available USB connector on the PC.

---

### 3.5 Available Software Applications

The CX1 comes with three software components that when coupled with the CX1 perform different operations.

- **CX Recorder**

CX Recorder is designed to configure and collect data for both short durations and extended-lengths of time from up to 10 CX1 units via Ethernet or USB. The output can be saved as compressed SNSR files or uncompressed CSV files.

- **CX Series Application Programming Interface**

The API is useful for computer programmers developing software that communicates with CX1 units. This component facilitates the incorporation of CX1 units into new or existing monitoring environments.

- **Sensware 2**

Sensware 2 graph-based data viewer and analyzing program that lets users review real-time and collected data. The program can be used for short-duration monitoring and recording of data from one CX1.

### 3.6 Installing CX Recorder

CX Recorder is contained in a compressed (zipped) folder. The name of the compressed folder contains “CXRecorder.zip”. Double-click the icon for the compressed (zipped) folder. A window should open to show the contents of the compressed folder. Drag the folder inside the window to a location on your desktop. CX Recorder is now located inside this folder on your desktop and is ready to be launched.

To execute the program, double-click the CXRecorder.exe file.

### 3.7 Installing the CX1 API

The CX Series API is contained in several compressed (zipped) folders. The names of the compressed folders all contain “API”. To install, consult your development environment documentation for including third-party API files.

### 3.8 Installing Sensware2

Sensware 2 is contained in a compressed (zipped) folder. The name of the compressed folder contains “Sensware2.zip”. Double-click the icon for the compressed (zipped) folder. A window should open to show the contents of the compressed folder. Drag the folder inside the window to a location on your desktop. Sensware 2 is now located inside this folder on your desktop and is ready to be launched.

To execute the program, double-click the Sensware2.exe file.

---

## **4 Miscellaneous**

### **4.1 CX1 Cleaning**

The CX1 can be cleaned by dampening a cloth with Windex™ and wiping down the exterior surfaces.

### **4.2 CX1 Storage**

Store the unit in a dry, indoor environment.

### **4.3 CX1 Calibration**

The CX1 uses a DC response accelerometer and is calibrated using the earth's gravity. The unit is factory-calibrated using precision surface plates and temperature chambers; users who want to check the calibration of their unit can connect a unit to a PC and see the output of the accelerometer. If it is suspected the unit requires calibration the user can contact the factory to arrange a review.

### **4.4 Technical Support**

If you have any questions about the product or require technical support please email us at [support@sensr.com](mailto:support@sensr.com) or call 563.245.3750. Standard hours of operation are 8 am - 5 pm CST, M—F.

### **4.5 Product Warranty**

SENSR LLC. (“SENSR”) warrants to the original Customer (“Customer”) that SENSR brand instruments (“Product”) are free from defects in material and workmanship under normal use and service for a period of 1 year commencing upon the date of purchase. This Limited Warranty is conditioned upon proper use of Product by Customer. This Limited Warranty does not cover: (a) defects or damage resulting from accident, misuse, abuse, neglect, unusual physical, electrical or electromechanical stress, or modification of any part of Product, including cables, or cosmetic damage; (b) equipment that has the serial number removed or made illegible; (c) any surfaces or other externally exposed parts that are scratched or damaged due to normal use; (d) malfunctions resulting from the use of Product in conjunction with accessories, products, or ancillary/peripheral equipment not furnished or approved by SENSR; (e) defects or damage from improper testing, operation, maintenance, installation, or adjustment; (f) installation, maintenance, and service of Product, or (g) Product used or purchased outside the United States or Canada. During the warranty period, SENSR will repair or replace, at SENSR's sole option, without charge to Customer, any defective component part of Product. To obtain service under this Limited Warranty, Customer must contact SENSR Customer care at 1.563.245.3750. Upon receipt, SENSR will promptly repair or replace the defective Product. SENSR may, at SENSR's sole option, use rebuilt, reconditioned, or new parts or components when repairing any Product or replace Product with a rebuilt, reconditioned or new Product. Repaired or replaced product will be warranted for a period equal to the remainder of the original Limited Warranty on the original Product or for 90 days,

---

whichever is longer. All replaced parts, components, boards and equipment shall become the property of SENSR. If SENSR determines that any Product is not covered by this Limited Warranty, Customer must pay all parts, shipping, and labor charges for the repair or return of such Product.

EXCEPT AS SET FORTH IN THE EXPRESS WARRANTY CONTAINED HEREIN, CUSTOMER TAKES THE PRODUCT "AS IS," AND SENSR MAKES NO WARRANTY OR REPRESENTATION AND THERE ARE NO CONDITIONS, EXPRESS OR IMPLIED, STATUTORY OR OTHERWISE, OF ANY KIND WHATSOEVER WITH RESPECT TO THE PRODUCT, INCLUDING BUT NOT LIMITED TO: THE MERCHANTABILITY OF THE PRODUCT OR ITS FITNESS FOR ANY PARTICULAR PURPOSE OR USE; OR COMPLIANCE OF THE PRODUCT WITH THE REQUIREMENTS OF ANY LAW, RULE, SPECIFICATION OR CONTRACT PERTAINING THERETO. NOTHING CONTAINED IN THE INSTRUCTION MANUAL SHALL BE CONSTRUED TO CREATE AN EXPRESS WARRANTY OF ANY KIND WHATSOEVER WITH RESPECT TO THE PRODUCT. ALL IMPLIED WARRANTIES AND CONDITIONS THAT MAY ARISE BY OPERATION OF LAW, INCLUDING IF APPLICABLE THE IMPLIED WARRANTIES OF MERCHANTABILITY AND FITNESS FOR A PARTICULAR PURPOSE, ARE HEREBY LIMITED TO THE SAME DURATION OF TIME AS THE EXPRESS WRITTEN WARRANTY STATED HEREIN. SOME STATES/PROVINCES DO NOT ALLOW LIMITATIONS ON HOW LONG AN IMPLIED WARRANTY LASTS, SO THE ABOVE LIMITATION MAY NOT APPLY TO YOU. IN ADDITION, SENSR SHALL NOT BE LIABLE FOR ANY DAMAGES OF ANY KIND RESULTING FROM THE PURCHASE, USE, OR MISUSE OF, OR INABILITY TO USE THE PRODUCT OR ARISING DIRECTLY OR INDIRECTLY FROM THE USE OR LOSS OF USE OF THE PRODUCT OR FROM THE BREACH OF THE EXPRESS WARRANTY, INCLUDING INCIDENTAL, SPECIAL, CONSEQUENTIAL OR SIMILAR DAMAGES, OR LOSS OF ANTICIPATED PROFITS OR BENEFITS, OR FOR DAMAGES ARISING FROM ANY TORT (INCLUDING NEGLIGENCE OR GROSS NEGLIGENCE) OR FAULT COMMITTED BY SENSR, ITS AGENTS OR EMPLOYEES, OR FOR ANY BREACH OF CONTRACT OR FOR ANY CLAIM BROUGHT AGAINST CUSTOMER BY ANY OTHER PARTY. SOME STATES/PROVINCES DO NOT ALLOW THE EXCLUSION OR LIMITATION OF INCIDENTAL OR CONSEQUENTIAL DAMAGES, SO THE ABOVE LIMITATION OR EXCLUSION MAY NOT APPLY TO YOU. THIS WARRANTY GIVES YOU SPECIFIC LEGAL RIGHTS, AND YOU MAY ALSO HAVE OTHER RIGHTS, WHICH VARY FROM STATE TO STATE/PROVINCE TO PROVINCE. THIS LIMITED WARRANTY SHALL NOT EXTEND TO ANYONE OTHER THAN THE ORIGINAL CUSTOMER OF THIS PRODUCT AND STATES CUSTOMER'S EXCLUSIVE REMEDY. IF ANY PORTION OF THIS LIMITED WARRANTY IS HELD ILLEGAL OR UNENFORCEABLE BY REASON OF ANY LAW, SUCH PARTIAL ILLEGALITY OR UNENFORCEABILITY SHALL NOT AFFECT THE ENFORCEABILITY FOR THE REMAINDER OF THIS LIMITED WARRANTY WHICH CUSTOMER ACKNOWLEDGES IS AND WILL ALWAYS

---

BE CONSTRUED TO BE LIMITED BY ITS TERMS OR AS LIMITED AS THE LAW PERMITS.